



Data Atelier for Metal Mining

What is Metal Mining ?



Ores are prospected, the mining site is explored, and any identified **deposits** are examined.



Some **examples** are **gold, silver, lead, zinc, copper** and **iron**.



The **ores** are mined on the **surface** or in the **subsurface**. Excavation and extraction methods may **vary**.



The **metal** is then **extracted** from the ore, processed to **remove impurities** and undergo other processes at **processing plants**.




Why is Metal Mining important?



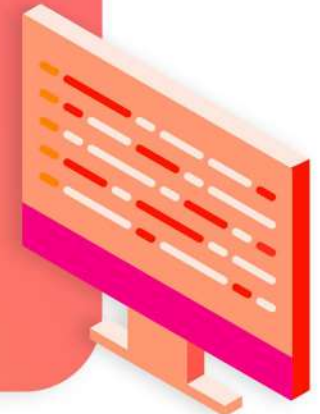
> The **rapid and clean** growth of metals mining industry is expected to help contribute towards a **global net-zero economy**.

> **Fast** technological progress transitions **shift** the demand of **raw materials** across different commodities.



> Some **metals** are surrounded by **large-scale industries**, and some have predicted **shortages** of supply over demand, while others may be scarcer than others, thus requiring mining operations to adjust.

> **Data analytics** and **processing** can play an important role in **debottlenecking** and enable cutting **carbon footprints** in operational processes such as drainage.



How Data Atelier can help in the Mining Industry



Thorough and Seamless Search Tool

- Find **correlation** between drillholes and extracted images (cores or thin sections).
- Gain fresh new **perspectives** on old and new data for **better results**.



File and Domain Tagging

- With further processing, files can be **classified** and **categorized** based on content.
- **Simplify** workflow and model design using Data Atelier's **data processing** derivatives.



Centralized Scheme and Structure

- Maps, models, spreadsheets, and many other files will be **centralized**.
- **Easy access** across all departments of the organization.
- **Decision making** will be far easier.

QA/QC Analyses

- Tools for **in-depth** and **rapid comprehension**.
- **QA/QC** analyses can be done with ease.
- **Visualize** and **monitor** the ingested data extracted from files.



Tracking and Extracting Data

- Vast amount of **numerical data** produced is **easily monitored**.
- **Tracking and Extraction** of machinery data will be **facilitated**.



Protection and Future-proofing

- **Mining contracts** and **leases**, **safety** and **environmental policies**, **blasting records** and **reports** will be protected.



Talk to us!

APAC & HQ (MALAYSIA)

Suite 8.01 Level 8, Menara Binjai
No.2 Jalan Binjai
50450 Kuala Lumpur
Malaysia

Info@irayaenergies.com
kualalumpur@irayaenergies.com
+603 2386 7741

EMEA (NORWAY)

Forusparken 2
4013 Stavanger
Norway

stavanger@irayaenergies.com

AMERICAS (US)

5444 Westheimer Rd, Suite 1000
Houston
TX 77056
United States

houston@irayaenergies.com

PHILIPPINES

6th Floor, Cyber One Building
11 Eastwood Avenue
Eastwood City Cyberpark, Bagumbayan
Quezon City, Philippines

DENMARK

Iraya Energies
India Quay 3
2100 Copenhagen
Denmark

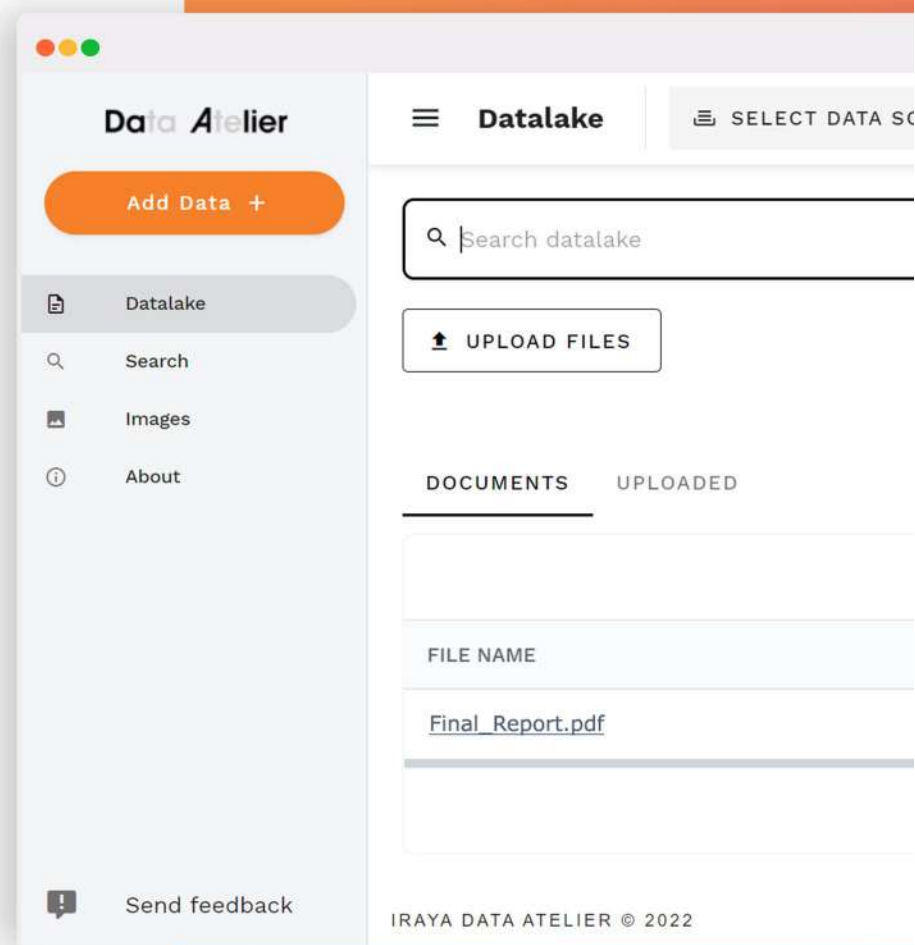
SINGAPORE

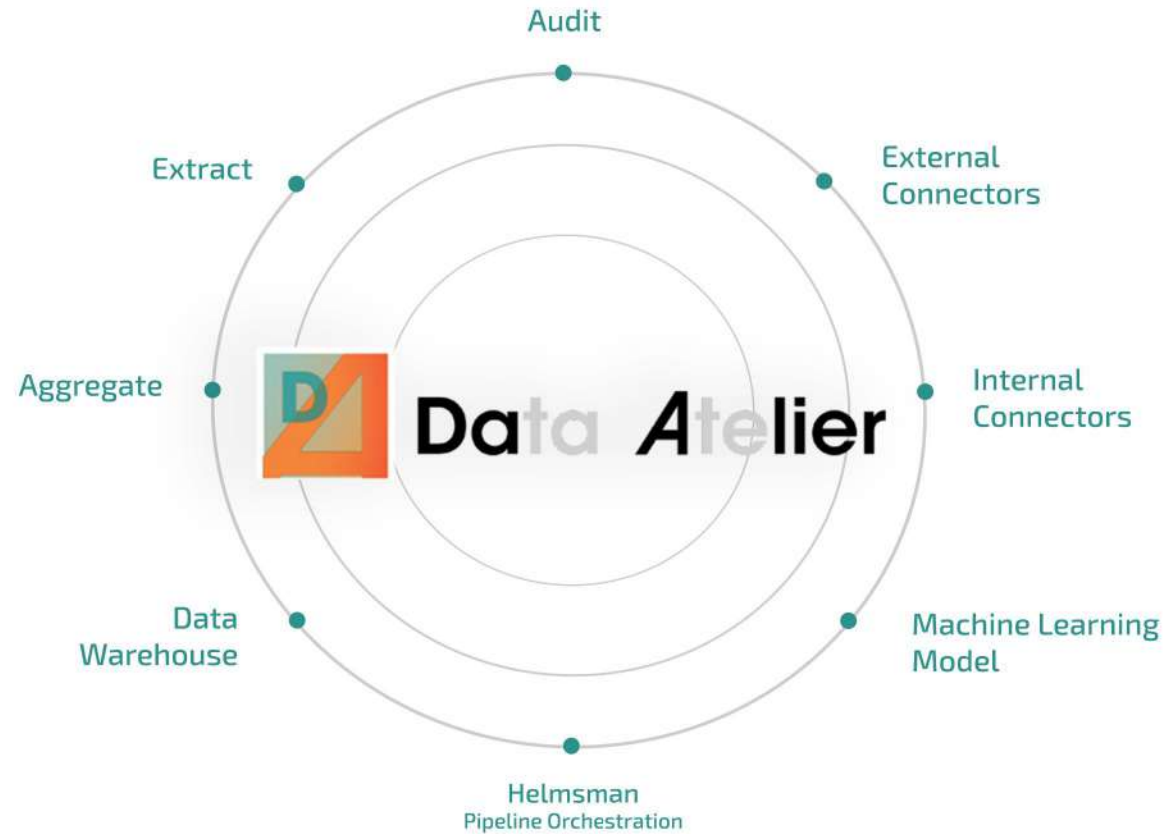
Iraya Energies Pte. Ltd.
16 Raffles Quay
#33-01 Hong Leong Building
Singapore 048581

UNITED ARAB EMIRATES

M3 Marine Technology
ADCP Tower-C, Office no. 2303
Electra Street
Abu Dhabi
United Arab Emirates

Locate your data
across a mess of silos





Manage and transform your data for a seamless unstructured data discovery
Start exploring your unstructured data today at

<https://data-atelier.irayaenergies.ai/register>

